

PB-GAS PARTICIPANTS'/USERS' MANUAL

CONTENTS

Introduction.....	2
TYPES OF USERS.....	2
FEATURES OFFERED BY THE PORTAL.....	3
REGISTRATION WITH THE PORTAL.....	3
AUTHENTICATION.....	4
HOME PAGE.....	4
USER DETAILS AND LOGOUT.....	4
AUTHORISED PARTICIPANTS.....	5
MENU.....	5
MULTI-LANGUAGE SUPPORT.....	6
Filters and REPORTS.....	6
PARTICIPANTS' PAGE.....	7
USERS' PAGE.....	7
SIGNATURE CERTIFICATE MANAGEMENT.....	7
SIGNATURE SUPPORT SET-UP.....	7
ADDITION OF A NEW SIGNATURE CERTIFICATE.....	11
MARGIN REPORT.....	13
DEFAULT PRICES.....	13
ENTRY OF ORDERS.....	15
List OF ORDERS.....	19
PAGE OF SESSIONs.....	19
MARKET RESULTS.....	20
GRAPH of DEMAND-SUPPLY INTERSECTION.....	21
STATEMENT OF ACCOUNT.....	22
Upload.....	22

LIST OF MESSAGES.....	23
DYNAMICS OF A MARKET SESSION.....	23
ENTRY OF ORDERS.....	23
CLOSING AND COMPLETION OF THE SESSION.....	24
CHECKING OF MARGINS.....	24
Invalidation of ORDERS.....	25
CHECKING OF GUARANTEES.....	25
EXECUTION AND <i>pro quota</i> apportionment of orders.....	25
MARKET RESULTS.....	26

INTRODUCTION

This manual describes the features offered by the **Gas Balancing Platform (PB-GAS)**. The manual is intended for Participants/users, who will find the description of all the pages of the portal to which they will have access and of all the options that they may select.

TYPES OF USERS

Similarly to the P-GAS and the M-GAS, the PB-GAS makes a distinction between **users** and **Participants**. The user has the credentials for accessing and using the options offered by the PB-GAS. Each user may be associated with one or more Participants of the gas market. Therefore, each transaction in the system is carried out by the user on behalf of a given Participant.

The portal manages two types of users:

- **User:** standard user who may use all the options available to Participants, e.g. entry of transactions;
- **Viewer:** user who can access the data in read-only mode and not allowed to enter transactions into the system.

Unless otherwise specified, this manual will only refer to **users**.

The PB-GAS portal is integrated with the P-GAS and M-GAS. Therefore, a PB-GAS user may be authorised for the P-GAS, the M-GAS, both or no other portal. In case of multiple authorisations, the user will use his/her credentials of access to and signature for the various platforms, as shown in the following paragraphs.

Likewise, a Gas Market Participant may be authorised for one, more or all the platforms (PB-GAS, P-GAS, M-GAS). A user accessing the PB-GAS will only represent the Participants that are authorised for the PB-GAS.

FEATURES OFFERED BY THE PORTAL

This section describes the features offered by the portal. First of all, the user must obtain access to the portal. After completing all the procedures specified in the applicable legislation, the user must register with the portal as indicated below.

REGISTRATION WITH THE PORTAL

To register with the portal, go to <https://gas.ipex.it/gaswebsite/Register.aspx> and enter your credentials. When trying to enter the page, you will see a pop-up window (Figure 1). On this window, you may select the certificate to be used for future authentications with the portal. Select one certificate and click on **Ok**.

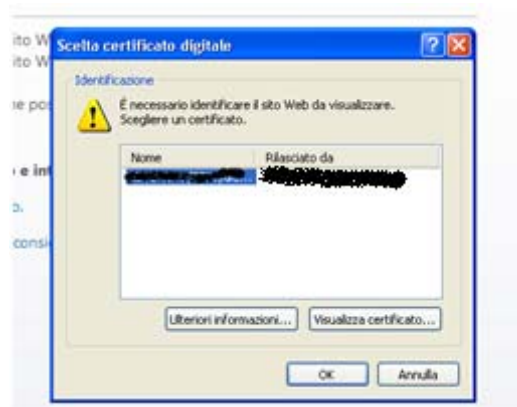


Figure 1: choice of authentication certificate

Figure captions
Select digital certificate
Identification
Identify the website that you wish to view
Name – issued by
Further information – view certificate
OK - cancel

The following is the page where you may enter the key data for registration, i.e. your name and surname and the registered name/company name of the Participant with whom you are associated. You may also add textual notes to your personal identification data.

Natural Gas Exchange

REGISTRATION DATA

nome

cognome

market players

note

Invia

Figure 2: entry of key personal identification data

Figure captions
REGISTRATION DATA
Name
Surname
Market Players/Participants
Remarks
Submit

After filling in the required fields, click on “[invia](#)” (submit) to enter your request into the system. You will receive a message about successful or unsuccessful completion of the request.

AUTHENTICATION

Authentication with the portal will take place through a **client authentication certificate**.

After authentication, you will retain the credentials to operate on the portal until the session expires or you explicitly close it.

HOME PAGE

Figure 3 shows the home page of the portal, with four main sections (numbered), which are always available, whatever the page you are on.

USER DETAILS AND LOGOUT

Section **(1)** shows the name of the authenticated user and its role (**user** or **viewer**). You may quit the portal and close the session by clicking on [Logout](#). To access the portal again, you must authenticate again.

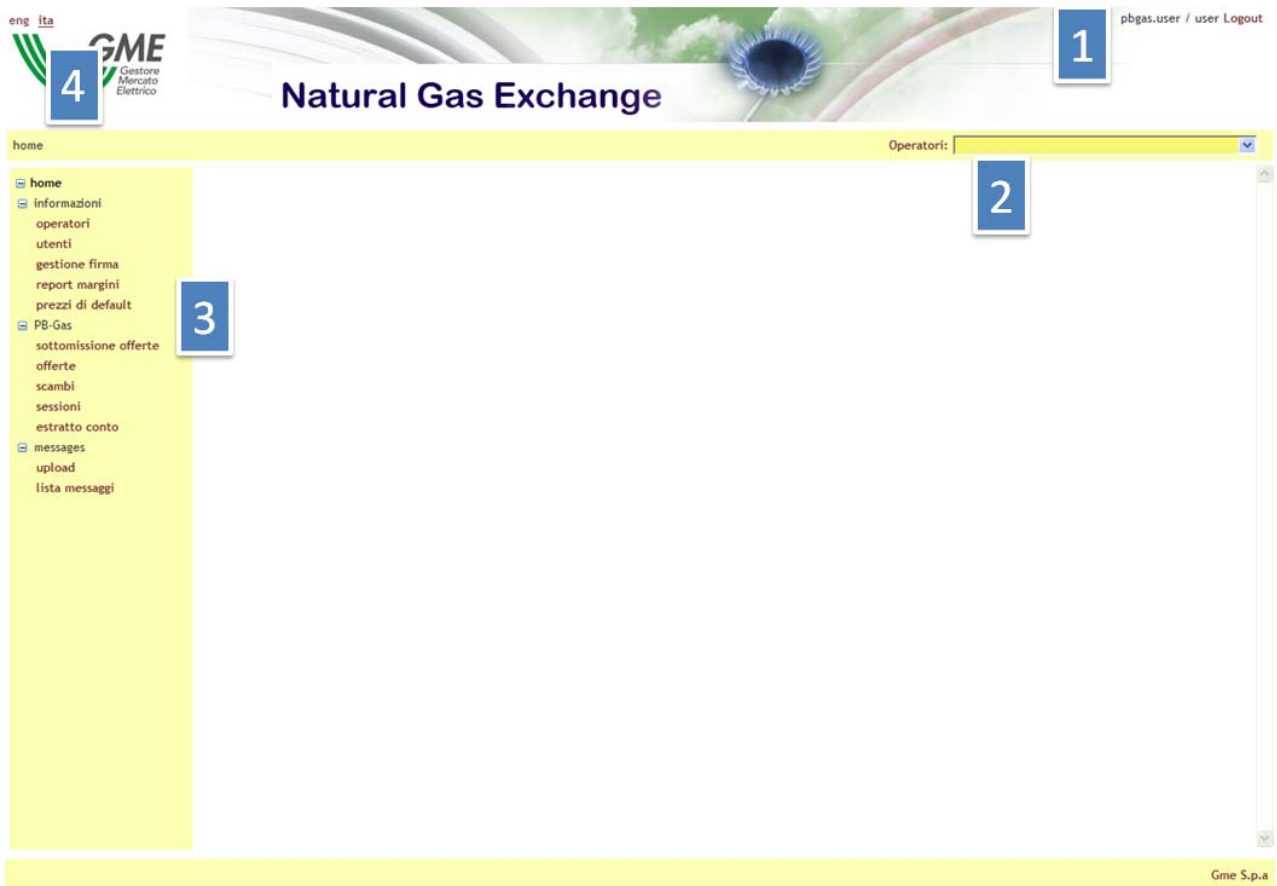


Figure 3: home page of the portal

Figure captions

Home

Data - Participants - users - signature management - margin reports – default prices – PB-GAS – entry of orders – orders – trades – sessions - statement of account – messages - upload – list of messages

AUTHORISED PARTICIPANTS

Section **(2)** shows a drop-down menu with all the Participants authorised to operate on the PB-GAS and associated with the current user. The activities that the user carries out on the portal – e.g. entry of orders – are associated with the Participant selected in the menu.

MENU

Section **(3)** shows the menu with links to all the pages that you may access. The **informazioni (data)** section groups all the pages with useful data for users. The **pb-gas** section collects the pages for entry and monitoring of orders, their status, the results of the market sessions and the statements of account of Participants.

Finally, the **messages** section displays the pages for uploading xml files and the list of input/output messages of the Participants associated with the current user.

MULTI-LANGUAGE SUPPORT

In the last section (4), you may select your default language, i.e. [eng](#) or [ita](#). All the pages will be displayed in the selected language. By changing the language, you will not only change the textual parts, but also the date format, in Italian (it-IT) or English (en-GB), and the decimal separator for figures: comma (“,”) for Italian and point (“.”) for English.

FILTERS AND REPORTS

Before reviewing the pages of the portal, it is worth describing a functionality which is common to all the report pages.

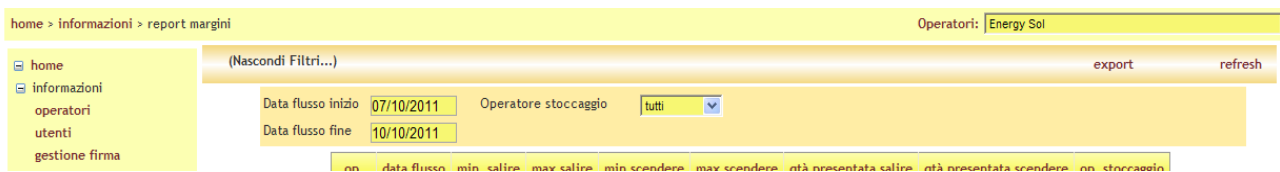


Figure 4: filters and reports in Excel

Figure captions

Home – data – margin report – Participants

Home – data – Participants – users - signature management

Hide filters – export – refresh

Start date of flow

End date of flow

Storage operator (all)

Each report page has a filter section, which is usually not shown upon the opening of the page. To show the section, click on the link ([Mostra filtri... - show filters](#)) on the right of the screen. Conversely, to hide it, click on ([Nascondi filtri...- hide filters](#)). You will see a filter section, where you may usually enter values that restrict the number of results of the underlying report. To reload the report taking into account the appropriate filters, click on [refresh](#) on the top left of the screen.

Finally, you may export the report in Excel format by clicking on [export](#). After doing so, the system will ask you to save the Excel report with all the results, without paging – contrary to what happens on the web page.

The screenshot shows the 'operatori' page. At the top, there is a breadcrumb trail 'home > informazioni > operatori' and a dropdown menu for 'Operatori' set to 'AZ Gas'. Below this, there is a navigation menu on the left with options like 'home', 'informazioni', 'operatori', 'utenti', 'gestione firma', 'report margini', 'prezzi di default', 'PB-Gas', 'sottomissione offerte', 'offerte', 'scambi', 'sessioni', 'estratto conto', 'messages', 'upload', and 'lista messaggi'. The main content area has a table with columns 'ragione soc.' and 'cod. operatore'. The table contains several rows of data, including 'ENERGIA SOLAR', 'ENERGIA SOLAR'. At the bottom of the table, there is a pagination control with buttons '1', '2', and '3'.

Figure 5: list of Participants authorised to operate on the PB-GAS

Figure captions

Home – data – Participants – Participants

Export - refresh

Home – data – Participants – users - signature management - margin reports - default prices - PB-GAS - entry of orders – orders – trades – sessions - statement of account – messages – upload - list of messages

Registered name/company name – Participant's code

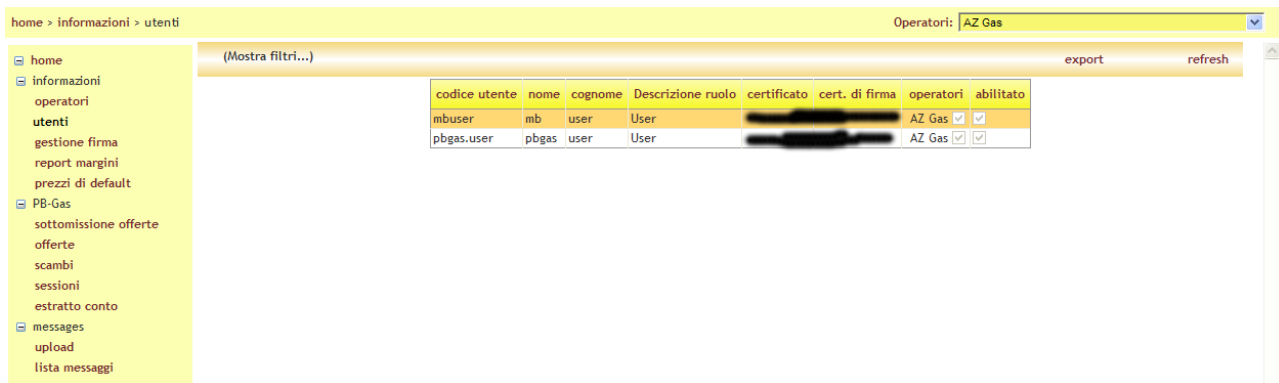
PARTICIPANTS' PAGE

The [operatori](#) (Participants') page displays the list of Participants authorised to operate on the PB-GAS. This is a read-only page showing only the Participant's registered name/company name and code.

If you click on [export](#), you may export the complete list of Participants to Excel.

USERS' PAGE

The [utenti](#) (Users') page is another read-only page, which lists all the users authorised to operate on behalf of the Participant selected in the top-right drop-down menu.



codice utente	nome	cognome	Descrizione ruolo	certificato	cert. di firma	operatori	abilitato
mbuser	mb	user	User			AZ Gas	<input checked="" type="checkbox"/>
pbgas.user	pbgas	user	User			AZ Gas	<input checked="" type="checkbox"/>

Figure 6: users' page

Figure captions

Home – data – users – Participants

Home – data – Participants – users - signature management - margin reports - default prices - PB-GAS - entry of orders – orders – trades – sessions - statement of account – messages – upload – list of messages

Show filters – export – refresh

Participant's code – name – surname – role description (user) – certificate – signature certificate – Participants - authorised

The data in the table include the username, the name and surname of the user, his/her role, data on the authentication and signature certificate, the Participant on behalf of whom the user is authorised to operate (i.e. the current Participant) and the specification whether the user is authorised or not. By clicking on ([Mostra filtri...- show filters](#)), you may access the section where to set the filters of the page. The list of users comes with a single field **Cerca** (find) where you may enter text to be searched in the username, name and surname.

SIGNATURE CERTIFICATE MANAGEMENT

To use a signature certificate, you must set up your computer in order to support software certification, as explained later on.

SIGNATURE SUPPORT SET-UP

To authenticate with the portal and sign the content of messages, you must install a plug-in which supports certificate activities. First of all, download the installation file from [GMECabs/GMECabs.exe](#)

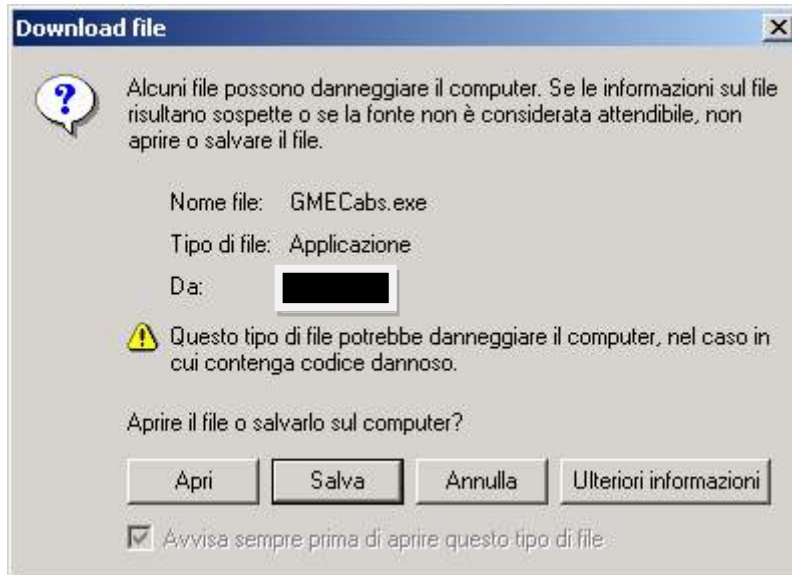


Figure 6: Plug-in download

Figure captions

Some files can harm your computer. If the file information below looks suspicious, or you do not fully trust the source, do not open or save this file.

File name: ...

File type: Application

From: ...

This type of file could harm your computer.

Would you like to open the file or save it to your computer?

Open - Save - Cancel - More Info

Always ask before opening this type of file

After completing the download, save the file without running it (Figure). Save the file in any directory, e.g. **c:\plugin**.

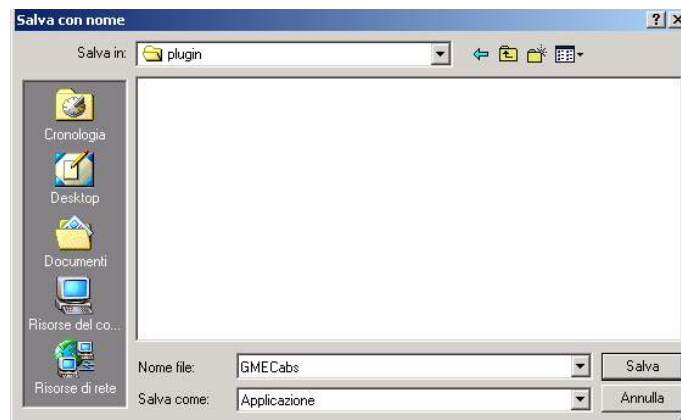


Figure 7: saving of installation file

Figure captions

Save in: plugin

My recent documents

Desktop

My documents

My computer

My network

File name: GME Cabs

Save as type: Application

Save - Cancel

After saving the file, open an MS-DOS prompt window. On Windows **Start** menu, click on **Run** and enter **cmd**.

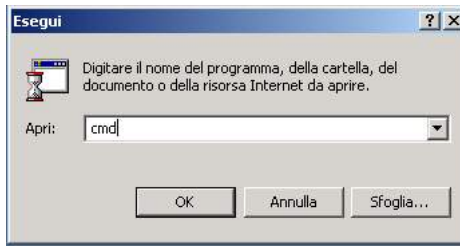


Figure 8: launching of MS-DOS window

Figure captions

Run

Type the name of a program, folder, document, or Internet resource, and Windows will open it for you

Open

OK – Cancel - Browse

Now, go to the directory where you have saved the installation file (e.g. C) and enter **cd c:\plugin**.



Figure 7: access to the directory with the installation file

After entering into the **c:\plugin** directory, run the **GMECabs.exe** file by entering **GMECabs.exe**, as shown in Figure 8.



Figure 8: running of GMECabs.exe

Now, confirm the directory where the files will be extracted (e.g. **c:\plugin**).

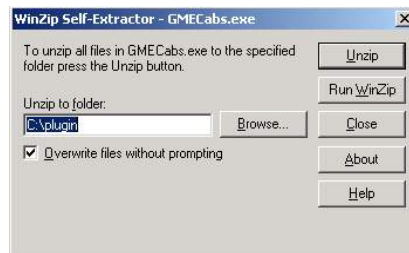


Figure 8: directory where the files will be extracted

Finally, go to the **GMECabs** subdirectory by entering the **cd GMECabs** command and run the **.bat** file as shown in Figure 11.

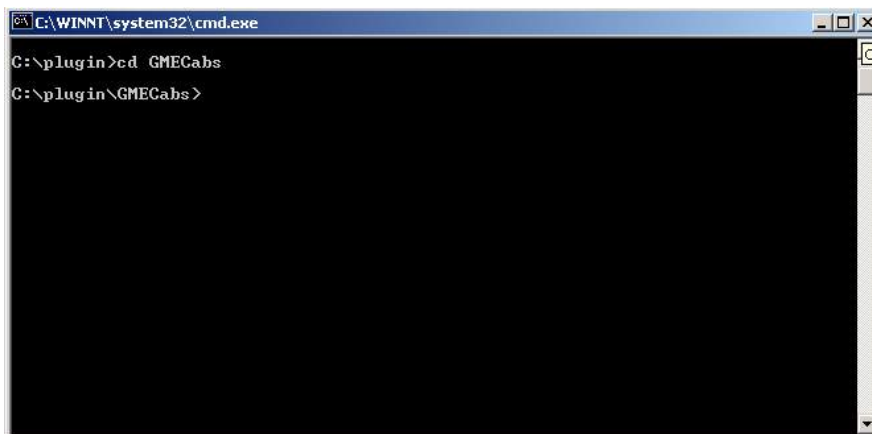


Figure 10: access to the GMECabs directory

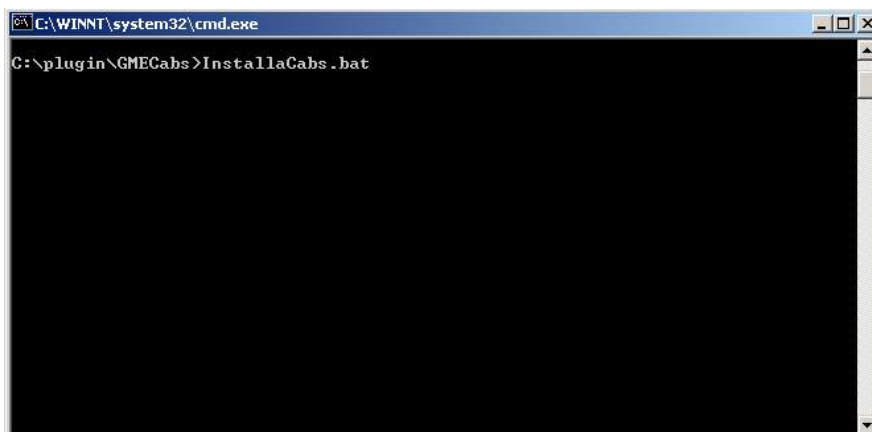


Figure 11: running of the .bat file.

Now, you may register your certificate with the system.

ADDITION OF A NEW SIGNATURE CERTIFICATE

By clicking on [gestione firma \(signature management\)](#), you will open a page on which you may manage your signature certificate. If you have no signature certificate, the page will be as shown in Figure 12: through the [Aggiungi \(add\)](#) link, you may add a certificate.

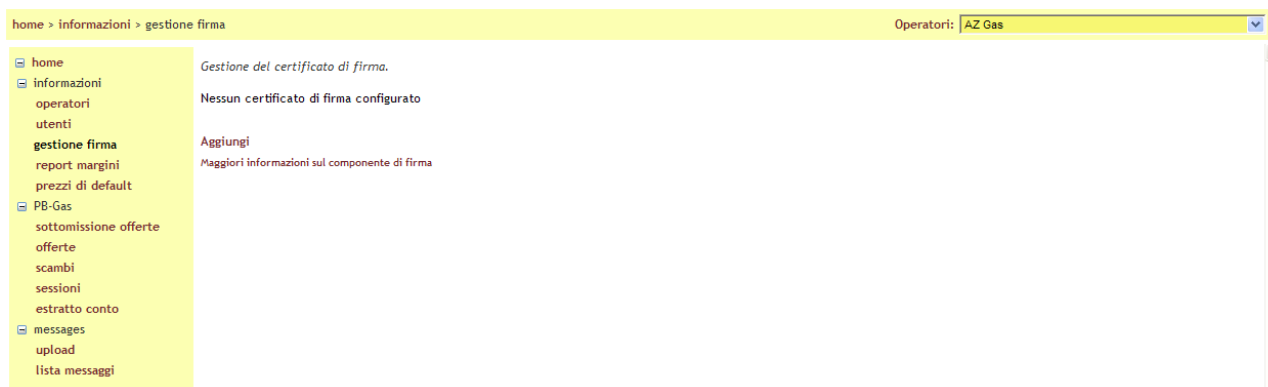


Figure 12: the user has no signature certificate but may add one on this page

Figure captions

Home – data – signature management - Participants

Home – data – Participants – users - signature management - margin reports - default prices - PB-GAS - entry of orders – orders – trades – sessions – statement of account – messages – upload – list of messages

Signature certificate management

No certificate of signature has been configured

Add

More info about the signature component

By clicking on [gestione firma \(signature management\)](#), you access a page on which you may manage your signature certificate. If you have no signature certificate, the page will be as shown in Figure 11: through the [Aggiungi \(add\)](#) link, you may add a certificate.

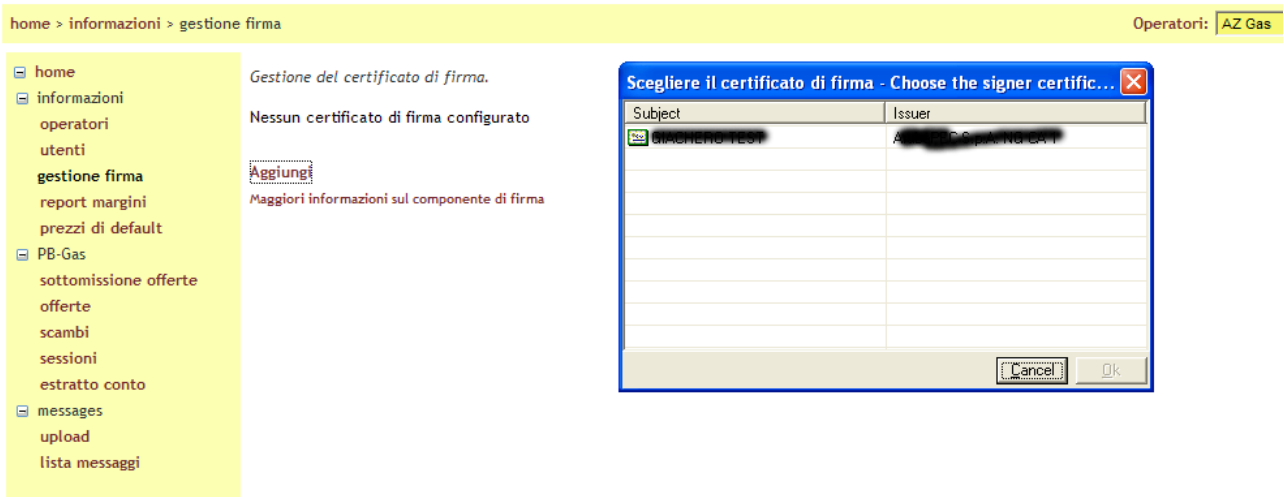


Figure 13: entry of new certificate

Figure captions

Home – data – signature management - Participants

Home – data – Participants – users - signature management - margin reports - default prices - PB-GAS - entry of orders – orders – trades – sessions

Signature certificate management

No certificate of signature has been configured

Add

More info about the signature component

After selecting the certificate, its details will be shown on the page. At this stage, you have to confirm the entry of the certificate, by clicking on [Salva \(Save\)](#).



Figure 13: details of certificate being entered

Figure captions

Home – data – signature management - Participants

Home – data – Participants – users - signature management - margin reports - default prices - PB-GAS - entry of orders – orders – trades – sessions – statement of account – messages – upload – list of messages

Signature certificate management

The signature certificate has been configured

Issuer....

End-of-validity date

Remove - Save

More info about the signature component

After entry, the certificate must be authorised by the portal administrator in order to be used in the transactions.

MARGIN REPORT

The [report margini](#) (margin report) shows, for all the Participants associated with the current user, the **margini minimi** and **massimi a scendere** and **a salire** (minimum and maximum step-down - purchase - and step-up - sale - margins). These margins are reported by SNAM Rete Gas. The margins are divided by **Operatore dello Stoccaggio** (storage operator) and **data di flusso** (date of flow).

op.	data flusso	min. salire	max salire	min scendere	max scendere	qtà presentata salire	qtà presentata scendere	op. stoccaggio
GASBIZ	08/10/2011	40,5	1.000,5	45,5	600,0	0,0	0,0	STOSGT
ENSOL	08/10/2011	20,0	2.000,0	50,3	300,1	0,0	0,0	STOSGT
AZGAS	08/10/2011	400,0	3.000,0	500,0	2.000,0	0,0	0,0	STOSGT

Figure 15: margin report

Figure captions

Home – data – margin report – Participants

Home – Data – Participants – Users - Signature management - Margin reports - Default prices - PB-GAS - Entry of orders – Orders – Trades - Sessions

Hide filters – export – refresh

Start date of flow

End date of flow

Storage operator

Participant – date of flow – min step-up – max step-up – min step-down – min step-down – step-up volume – step-down volume – storage operator

The report also shows the **volumes offered for purchase and sale**. The volumes have a different colour depending on whether they violate or do not violate the margins: blue if the volume is below the minimum margin; black if it is within the margins; red if it exceeds the maximum margin.

Figure 15 shows the filters for the data reported in the underlying table. You may specify a date range. So, if you specify a period of multiple days (i.e. multiple dates of flow), the table will include multiple items: one row for each **<data, operatore, operatore dello stoccaggio>** (date, Participant, storage operator). If, for a date of flow, the margins are not yet available, the system will display a blank row will appear, possibly with the volumes already entered by the Participants. Moreover, you may filter the data by storage operator.

As soon as the system receives data about the margins for a date of flow, the same will be available on this report; consequently, the already entered volumes will be coded with the appropriate colour.

DEFAULT PRICES

On the page with the [prezzi di default](#) (default prices), you may - on behalf of the Participants with whom you are associated – manage the default sale and purchase prices, distinguished by storage operator.

By specifying a default price, Participants will be certain that the margins will always be covered for each market session. Suppose, for instance, that a Participant has defined a default sale price equal to **22.53 €/GJ** and that the minimum step-up margin for that date of flow is **100 GJ/day**. If the Participant has not entered orders for that date of flow, the system will generate an order with volume equal to **100 GJ/day** and a price of **22.53 €/GJ**.

home > informazioni > prezzi di default Operatori: Energy

op.	op. stoccaggio	prezzo vendita	prezzo acquisto
GASBIZ	STOSGT		
ENSOL	STOSGT	22,53	
AZGAS	STOSGT	23,60	12,70

Figure 16: page for entry of default prices

Figure captions

Home – data – default prices – Participants

Home – Data – Participants – Users - Signature management - Margin reports - Default prices - PB-GAS

Participant – storage operator – sale price – purchase price

Conversely, if the Participant has entered an order that does not completely cover the margin, e.g. with a volume of **45 GJ/day**, then the system will generate an order with a price of **22.53 €/GJ** and a volume of **100-45 = 55 GJ/day**.

Obviously, if no price is specified and the margins are not satisfied, no order will be generated.

Note that the reference volume for coverage of the margin is not necessarily the minimum margin, but it is in general the **minimum value between the minimum margin and the maximum margin**.

Note also that a default price is not specific for a date of flow, but it invariably applies to all the market sessions, unless it is revoked by the Participant.

Let us now see how to specify or revoke a price.

home > informazioni > prezzi di default Operatori: AZ Gas

op.	op. stoccaggio	prezzo vendita	prezzo acquisto
GASBIZ	STOSGT		
ENSOL	STOSGT	22,53	
AZGAS	STOSGT	23,60	12,70

Codice Operatore ENSOL

Operatore stoccaggio STOSGT

prezzo vendita Not set

prezzo acquisto Not set

Update Cancel

Figure 17: configuration of default prices

Figure captions

Home – data – default prices – Participants

Home – Data – Participants – Users - Signature management - Margin reports - Default prices - PB-GAS - Entry of orders – Orders - Trades – Sessions - Statement of account – Messages – Upload - List of messages

Participant – storage operator – sale price – purchase price

Participant’s code

Storage operator

Sale price

Purchase price

Update - Cancel

Figure 17 shows the pop-window where you may configure the default prices for a given Participant and a given storage operator. You may specify only one of the two default prices (sale and purchase), both or none of the two. If the prices are not specified, the already existing prices are considered to be revoked. To revoke or not to specify a price, you may delete the numerical value in the text box or check the **Not set** box and the content of the text box will be automatically deleted.



Figure 18: signature page before submitting default prices

Figure captions

Home – data – default prices – Participants

Home – Data – Participants – Users - Signature management - Margin reports - Default prices - PB-GAS - Entry of orders – Orders

Cancel – sign and submit

Participant’s code – storage operator – sale price – purchase price

If you change the default prices and then click on **Update**, you will pass to the content signature page to be submitted to the system (Figure 18). Here, you may see the key data entered into the system: Participant’s code, storage operator’s code, default sale price and default purchase price; the latter is not specified (therefore, it will overwrite any default purchase price already saved in the system).

The orders that are automatically generated by the system to cover the margins are identified as **“MARGIN VIOLATION GENERATED OFFER”** in the notes section. We will see this aspect when dealing with the dynamics of the market sessions.

ENTRY OF ORDERS

Let us see the pages of the [pb-gas](#) section. Unquestionably, the most important page is the [sottomissione offerte \(order entry\)](#) one. Each activity carried out on this page refers to the Participant selected on the top right of the screen.

home > PB-Gas > sottomissione offerte Operatori: AZ Gas

Mercato: Data di flusso:

Codice Operatore:

Stogit S.P.A. (salire)

quantità minima: 400,0 GJ/giorno quantità massima: 3000,0 GJ/giorno quantità rimanente: 3000,0 GJ/giorno

Sostituzione

Tipo di offerta	Prezzo [€/GJ]	Quantità [GJ/giorno]
<input type="button" value="Vendita"/>	12,4	500
<input type="button" value="Vendita"/>	12,73	345,5
<input type="button" value="Vendita"/>	16	1.000
<input type="button" value="Vendita"/>	17,12	189,2
<input type="button" value="Vendita"/>		
<input type="button" value="Vendita"/>		
<input type="button" value="Vendita"/>		
<input type="button" value="Vendita"/>		

Figure 19: order entry page

Figure captions

Home – PB-GAS – entry of orders – Participants

Home – Data – Participants – Users - Signature management - Margin reports - Default prices - PB-GAS - Entry of orders – Orders – Trades – Sessions - Statement of account – Messages – Upload - List of messages

Market – Date of flow

Participant’s code

Clear form – Load entered orders – Sign and submit

Stogit S.p.A. (step-up) – Stogit S.p.A. (step-down)

Minimum volume ... GJ/day – maximum volume... GJ/day – remaining volume ... GJ/day

Clear tab – replacement – load orders

Type of order (sale) – Price (€/GJ) – Volume (GJ/day)

The page is organised as follows: in the top part, two drop-down menus: one for the market (for the time being only the MBS) and the more significant drop-down menu with the dates of flow corresponding to the market sessions that are open. If you select a date of flow, all the transactions carried out on the page will refer to that date of flow.

In the **codice operatore** (Participant’s code) field, you may enter a text note to be applied to all the orders submitted to the system.

Below this section, there are two tabs, which refer to the storage operator and make a distinction between step-up orders (sale) and step-down orders (purchase). Generally, each authorised storage operator will be associated with two tabs.

Just above the tabs, you will find three links:

- **“Ripulisci form” (clear form)**: it clears the text boxes of all the tabs, deleting possible numerical values;
- **“Carica offerte inoltrate” (load entered orders)**: it displays - in the text boxes - the orders already entered for that date of flow;
- **“Firma e invia” (sign and submit)**: by clicking on this link, you will initiate the order submission process, as indicated later on.

Each tab contains some useful data, i.e. the **overall minimum and maximum volumes (quantità minima and massima)** allowed for that storage operator and that type of order (sale or purchase). These volumes practically

correspond to the margins notified by Snam Rete Gas. Just as for the margin reports, these data appear as soon as the notification with the margins for each operator is received. Beside these values, you will also see the **remaining volume (quantità rimanente)** with respect to the maximum margin.

Below this section, you will see the [svuota tab \(clear tab\)](#) link that you may use to clear the text fields of the tab only, leaving those of the other tabs unaltered. The check box **Sostituzione** (replacement) indicates that the first order specified below will replace the first order already present in the system (with regard to the context of the tab: storage operator and type of order).

[Carica offerte \(load orders\)](#) displays the already entered orders but only for that tab. The other tabs remain unaltered.

Finally, you will find the ten steps of the order, for each of which you must specify the price and the volume. You must not specify each step; therefore, you may specify only one step for each tab.

By clicking on [Firma e invia \(sign and submit\)](#), you will launch the signature and order submission process. If you specify orders with prices not satisfying a maximum or minimum threshold, the system will propose a page requesting further confirmation.

Tipo di offerta	Prezzo [€/GJ]	Quantità [GJ/giorno]	Note	StorageOperator	Azione
Acquisto	3	9		STOSGT	Inserisci

Figure 20: request of confirmation of very low price

Home – PB-GAS – entry of orders – Participants

Home – Data – Participants – Users - Signature management

The following orders have a price lower than the minimum threshold or higher than the maximum threshold. Do you want to proceed?

Back – confirm

Type of order (purchase) – Price (€ GJ) – Volume (GJ/day) - Notes – Storage operator – Action (enter)

Figure 20 exemplifies a buy order with a price of **3 €/GJ**. The page requests confirmation ([continua - confirm](#)) or allows you to go [indietro \(back\)](#) in order to make appropriate corrections. By clicking on [continua \(confirm\)](#), you finally get to the page for signing the content of the orders and submitting them.

Tipo di offerta	Prezzo [€/GJ]	Quantità [GJ/giorno]	Note	Operatore stoccaggio	Sostituzione	Azione
Acquisto	3	9		STOSGT	False	Inserisci
Vendita	12,4	500		STOSGT	False	Inserisci
Vendita	12,73	345,5		STOSGT	False	Inserisci
Vendita	16	1000		STOSGT	False	Inserisci
Vendita	17,12	189,2		STOSGT	False	Inserisci

Figure 21: signature of content

Home – PB-GAS – entry of orders - Participants

Cancel – sign and submit

Home – Data – Participants – Users - Signature management - Margin reports - Default prices - PB-GAS – entry of orders – Orders – Trades – Sessions - Statement of account - Messages

Figure 21 shows the key data of orders: type of order, unit price, volumes, notes, storage operator associated with the order, specification of replacement and action. In this case, the action is always “**inserisci**” (**enter**). In general, you may also carry out actions of **cancellazione (delete)** and **modifica (modify)**. To carry out these actions, you must load the already entered orders into the tab through the above-described links or by merely reloading the page (whenever the page is reloaded, the already entered orders are automatically shown).



Figure 22: management of already entered orders

Figure captions

Home – PB-GAS – entry of orders – Participants

Home – Data – Participants – Users - Signature management - Margin reports - Default prices - PB-GAS - Entry of orders – Orders – Trades – Sessions - Statement of account – Messages – Upload - List of messages

Market – Date of flow

Participant’s code

Clear form – Load entered orders – Sign and submit

Stogit S.p.A. (step-up) – Stogit S.p.A. (step-down)

Minimum volume ... GJ/day – maximum volume... GJ/day – remaining volume ... GJ/day

Clear tab – Replacement – load orders

Type of order (sale) – Price (€/GJ) – Volume (GJ/day) – Action (modify)

Figure 22 shows the already entered orders. Note that, with respect to Figure 19, the volume of the second order has been modified, whereas the fourth order is marked with the **Delete** action.

Figure 23 shows the page of confirmation of delete and modify actions. Note that the page only reports the orders which have actually been **modified** or **revoked**.

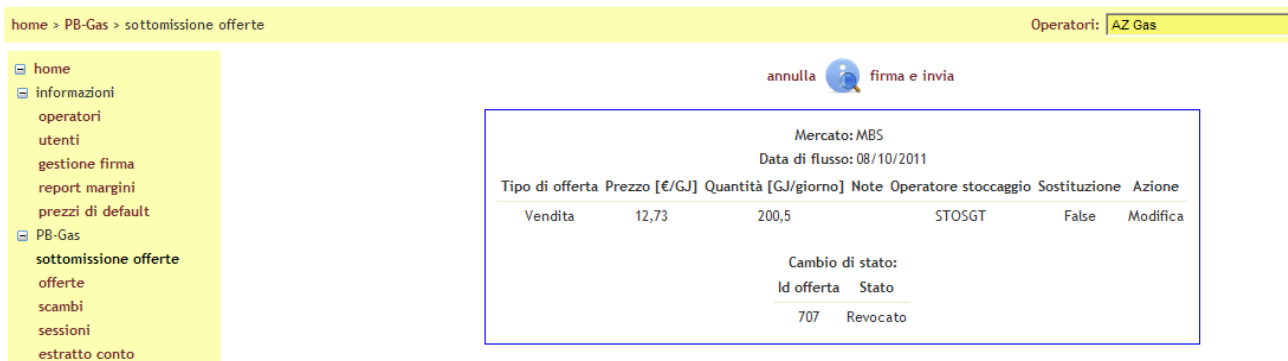


Figure 23: confirmation of modify and delete actions

Figure captions

Home – PB-GAS – entry of orders - Participants

Home – Data – Participants – Users - Signature management - Margin reports - Default prices - PB-GAS - Entry of orders – Orders – Trades – Sessions - Statement of account

Cancel – sign and submit
 Market
 Date of flow
 Type of order (sale) – Price (€/GJ) – Volume (GJ/day) – Notes - Storage operator – Replacement - Action (modify)
 Change of status
 Order id – Status (revoked)

LIST OF ORDERS

After managing your orders, you may view the order report (Figure 23). Note that the report is specific for the operator selected in top-right part of the screen.

mercato	qtà or.	qtà tagl.	awqty	prezzo	p.acc.	data flusso	data	op.	tipo	stato	id off.	utente	op. stoccaggio	Notes
MBS	189,2	189,2		17,12	-	08/10/2011	07/10/2011 10.59.34	AZGAS	vendita1	revocata	707	pbgas.user	STOSGT	
MBS	1.000,0	1.000,0		16,00	-	08/10/2011	07/10/2011 10.59.34	AZGAS	vendita1	sottomessa	706	pbgas.user	STOSGT	
MBS	200,5	200,5		12,73	-	08/10/2011	07/10/2011 11.10.51	AZGAS	vendita1	sottomessa	705	pbgas.user	STOSGT	
MBS	500,0	500,0		12,40	-	08/10/2011	07/10/2011 10.59.34	AZGAS	vendita1	sottomessa	704	pbgas.user	STOSGT	
MBS	9,0	9,0		3,00	-	08/10/2011	07/10/2011 10.59.34	AZGAS	acquisto	sottomessa	703	pbgas.user	STOSGT	

Figure 24: list of orders

Figure captions

Home – PB-GAS – orders – Participants

Home – Data – Participants – Users - Signature management - Margin reports - Default prices - PB-GAS - Entry of orders – Orders – Trades - Sessions

...

(Hide filters...) – export – refresh

Start date of flow – type of operation (all) – order id – market

End date of flow – status of order (all) – msg id

Market – ordered volume – price – accepted price – date of flow – date - Participant – type (sale/purchase) – status (revoked – submitted) – order id – user – storage operator - notes

Through filters, you may view the orders by flow-date range, type of transaction (sale and/or purchase) and order status. You may also specify the id of the order or the id of the xml message through which the order has been transmitted.

The table shows the following details: market, entered volume, cut volume (this point will be discussed later on), accepted volume (visible only upon confirmation of the session), price, price of acceptance of the order, date of flow, date of entry of the order (or of its latest change), code of the Participant who has entered the order, type of order, status of the order, order id, user who has entered it, code of the storage operator and notes, if any.

PAGE OF SESSIONS

This page provides a list of the market sessions, i.e. all the sessions of the MBS and for each of them: the id of the session, the date of flow, the opening time, the closing time, the market and the status. As regards the status, a session may be **aperta (open)**, **chiusa (closed)** or **completata (completed)**. Open sessions permit order entry and management (**modify** or **revoke**). A closed session no longer accepts orders or changes to already entered orders. A session is deemed to be completed when it has been carried out, the matchings have been confirmed and the marginal price has been determined.

home > PB-Gas > sessioni Operatori: AZ Gas

(Mostra filtri...) export

id sessione	data	apertura	chiusura	mercato	stato	
290	11/10/2011	06/10/2011 20.00.00	11/10/2011 20.00.00	MBS	APERTA	
287	10/10/2011	05/10/2011 20.00.00	10/10/2011 20.00.00	MBS	APERTA	
284	09/10/2011	04/10/2011 20.00.00	07/10/2011 12.12.31	MBS	COMPLETATA	risultati di mercato grafico Asta Sell qty: 4.900,0 Buy qty: 1.570,0 M. price: 14,50 M. qty: 1.570,0
283	08/10/2011	03/10/2011 20.00.00	07/10/2011 11.55.14	MBS	COMPLETATA	risultati di mercato grafico Asta Sell qty: 3.805,8 Buy qty: 2.560,6 M. price: 16,00 M. qty: 2.560,6
282	07/10/2011	02/10/2011 20.00.00	07/10/2011 12.22.10	MBS	COMPLETATA	risultati di mercato grafico Asta Sell qty: 712,7 Buy qty: 4.560,0 M. price: 34,30 M. qty: 712,7
280	06/10/2011	01/10/2011 20.00.00	06/10/2011 10.31.11	MBS	COMPLETATA	risultati di mercato grafico Asta Sell qty: 1.021.224,2 Buy qty: 130,0 M. price: 12,40 M. qty: 130,0

Figure 25: session report

Figure captions

Home – PB-GAS – sessions - Participants

Home – Data – Participants – Users - Signature management - Margin reports - Default prices - PB-GAS - Entry of orders – Orders – Trades – Sessions - Statement of account – Messages – Upload - List of messages

(Hide filters...) – export

Session ID – date - opening – closing – market – status (OPEN – COMPLETED)

market results – graph

auction

The completed sessions show the details reported in Figure 25: entered sell volume, entered buy volume, marginal price and marginal volume. Each completed session also displays two links: [risultati di mercato \(market results\)](#) and [grafico \(graph\)](#).

MARKET RESULTS

If you click on [risultati di mercato \(market results\)](#), you will open a page with additional details, as well as the entered volumes, the marginal price and the marginal volume.

Operatori: AZ Gas

Back export

Market: MBS Flow Date: 09/10/2011

Risultati asta implicita

Sell qty: 4.900,0 GJ/giorno Buy qty: 1.570,0 GJ/giorno
Marginal price: 14,500 €/GJ Marginal qty: 1.570,0 GJ/giorno

Posizione netta al PSV

Ragione Sociale	Codice Operatore	data	Qtà (Stogit)	Qtà (Edison)
AZ Gas	AZGAS	09/10/2011	-958,3	0
Energy Sol	ENSOL	09/10/2011	-611,7	0

Figure 26: market results

Figure captions

Participants

Back – export

Home – Data – Participants – Users - Signature management - Margin reports - Default prices - PB-GAS - Entry of orders – Orders – Trades – Sessions - Statement of account...

Market...

Implicit auction results

Net position at the PSV

Registered name/company name – Participant's code – date – volume (Stogit) – volume (Edison)

Below, you will see the net positions of Participants (only those associated with the current user). For each Participant, the page shows the net position for each storage operator.

GRAPH OF DEMAND-SUPPLY INTERSECTION

If you click on [grafico \(graph\)](#) on the page of sessions, you will open a pop-up window with the data already displayed in the previous two pages and the graph with the intersection of demand and supply curves.

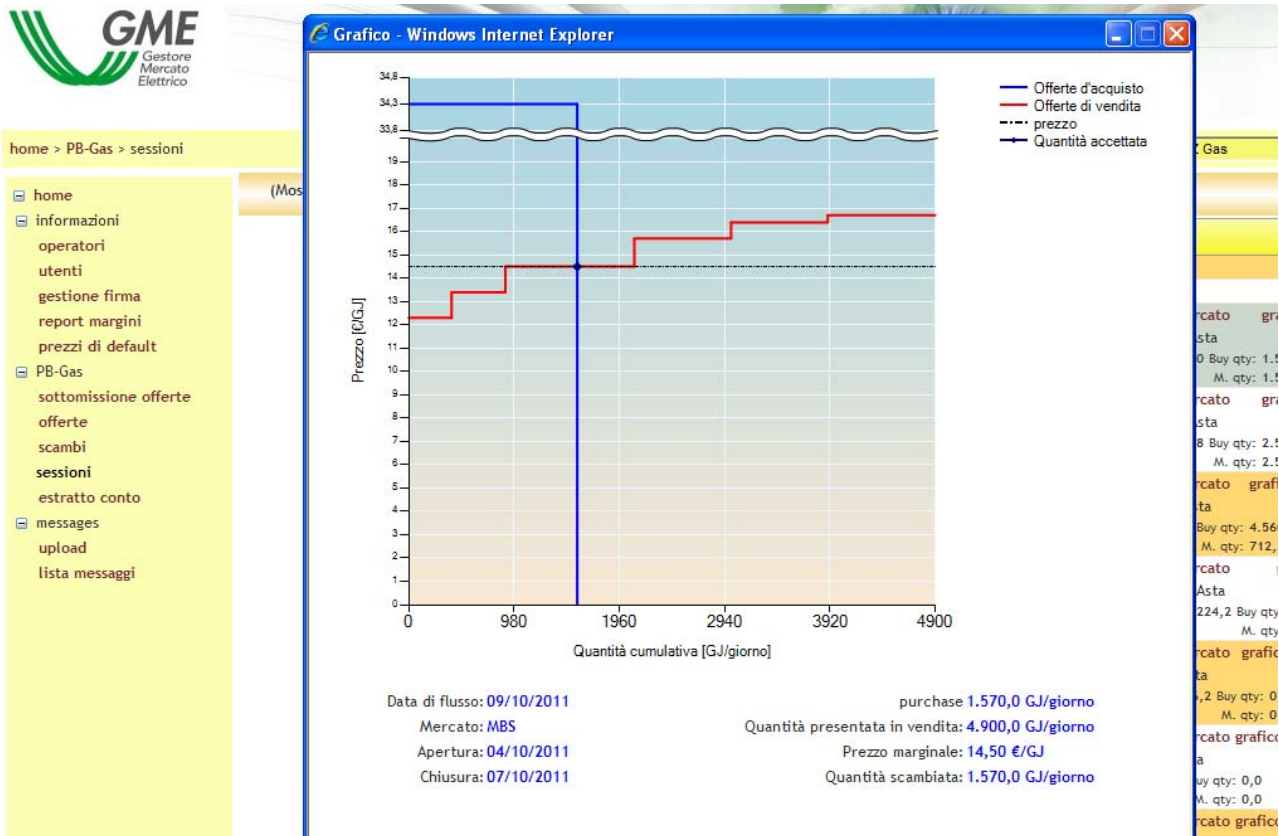


Figure 27: graph showing the intersection of the demand curve with the supply curve

Figure captions

Home – PB-GAS – sessions

Home – Data – Participants – Users - Signature management - Margin reports - Default prices - PB-GAS - Entry of orders – Orders – Trades – Sessions - Statement of account Home

Data

Participants

Users

Signature management

Margin reports

Default prices

PB-GAS

Entry of orders

Orders

Trades

sessions

Statement of account

Messages

Upload

List of messages

Graph

Buy orders – sell orders – price – accepted volume

Price

Cumulated volume
Flow date/market/opening/closing
Purchase: .../gas-day
Volume to be sold: .../gas-day
Marginal price: ... /gas-day
Volume traded: .../gas-day

STATEMENT OF ACCOUNT

The last page of the [pb-gas](#) section is the [estratto conto \(statement of account\)](#); this report shows data about the financial guarantee of each Participant.

home > PB-Gas > estratto conto Operatori: AZ Gas

(Nascondi Filtri...) export

Seleziona l'ammontare Data iniziale 09/10/2011

Seleziona le note Data finale 09/10/2011

Tipo di movimento

Ammontare: 700.000,00 €

Garanzia disponibile: 800.753,14 €

Id Movimento	cod. operatore	Descrizione movimento	Data di flusso	Ammontare	note	data
3759	AZGAS	Financial Movement	09/10/2011	6.960,00		07/10/2011 12.12.59
3760	AZGAS	Financial Movement	09/10/2011	9.714,42		07/10/2011 12.12.59

Figure 28: statement of account

Figure captions

Home – PB-GAS – statement of account - Participants

Home – Data – Participants – Users - Signature management - Margin reports - Default prices - PB-GAS - Entry of orders – Orders – Trades – Sessions - Statement of account – messages

Hide filters.... – export

Select amount/start date

Select notes/end date

Type of movement

Amount

Available guarantee

Movement id - Participant's code - Movement description - Flow date – amount – notes - date

You may view the amount of the guarantee, based on the data periodically reported by SNAM Rete Gas and the available amount, net of the financial transactions carried out. Below, you will see the financial movements not yet settled.

As you may see in Figure 28, you may filter the data by launching the search for a specific amount, a specific note, a range of flow dates and a type of movement (financial movement, adjustment).

UPLOAD

After describing the [pb-gas](#) section of the menu, let us pass on to the last section, [messages](#). You may use the [upload](#) page to send the xml files specified in the **implementation guide** to the system.

This manual describes only how to upload a file. You must select the Participant to whom the xml file refers, otherwise the system will reject the message. By clicking on **sfoglia** (browse), you may select the file. Then, by pressing **Upload file** you may load it to the system, after signing its content. You may view the outcome of the transaction that you have carried out in the system on the page with the [lista messaggi \(list of messages\)](#), described below.

LIST OF MESSAGES

On this page, you may view all the input messages and the output messages coming from the system. You will see not only the xml files that you have entered via the upload page: each transaction carried out in the system through the normal pages of the Platform will be converted into an xml file and stored into the database. Therefore, the list of messages also shows the transactions carried out via the web pages.

Let us analyse in detail the columns of the table. Id messaggio (message id) is also a link through which you may view the original xml message with the details of the transaction. Likewise, the id of the out message shows the **FA**, i.e. the outcome of the transaction. The third column shows the content which has been signed upon submission via the web pages. Then, you may see the status of the message, the Participant's code, the user who has submitted the file, the file name, the timestamp, the percentage of success of the transaction (for instance, if you enter 4 orders with the same file and only 3 of them are accepted by the system, the column will show 3 -> 4) and, finally, the processing time.

id message	id out message	Contenuto	message subject	message status	op.	user code	file name	timestamp	Transazione	elab. time
1199	30095	Visualizza	Offers	OUT	AZGAS	pbgas.user	Offers.xml	07/10/2011 12.10.55	4 -> 4	00.09
-	30092		MBMR	OUT	AZGAS		MBMR_8976ee4545	07/10/2011 12.07.13		
-	29200		MBBN	OUT	AZGAS		MBBN_6bc229863c	07/10/2011 11.56.29		
-	29645		MBMR	OUT	AZGAS		MBMR_e9bdce4fea	07/10/2011 11.56.29		
1177	29178	Visualizza	OffersChangeStatus	OUT	AZGAS	pbgas.user	Offers.xml	07/10/2011 11.10.51	1 -> 1	00.01
1176	29177	Visualizza	Offers	OUT	AZGAS	pbgas.user	Offers.xml	07/10/2011 11.10.51	1 -> 1	00.03
1175	29176	Visualizza	Offers	OUT	AZGAS	pbgas.user	Offers.xml	07/10/2011 10.59.34	5 -> 5	00.12
1174	29175	Visualizza	DefaultPrices	OUT	AZGAS	pbgas.user	DefaultPrices.x	07/10/2011 9.33.15	1 -> 1	00.00
1172	29173	Visualizza	DefaultPrices	OUT	AZGAS	pbgas.user	DefaultPrices.x	07/10/2011 9.06.19	1 -> 1	00.00
1167	29166	Visualizza	DefaultPrices	OUT	AZGAS	mbuser	DefaultPrices.x	07/10/2011 8.28.26	1 -> 1	00.00

Figure 29: list of messages

Figure captions

Home – messages – list of messages – Participants

Hide filters... export – refresh

Home – Data – Participants – Users - Signature management - Margin reports - Default prices - PB-GAS - Entry of orders – Orders – Trades – Sessions - Statement of account – PB-GAS – entry of orders – trades – sessions – statement f account - Messages – Upload - List of messages

Start date/end date/mark

Message id – out message id – content (display) – message subject – message status (OUT) – Participant – ... transaction – processing time

Trough the filters, you may select messages with a timestamp included in a given date range.

By checking the mark box, you may identify the output messages as downloaded, if you have displayed them by clicking on the out message id.

DYNAMICS OF A MARKET SESSION

The following are some typical scenarios permitting you to better understand the dynamics of a market session.

ENTRY OF ORDERS

As previously pointed out, each Participant may enter up to 20 orders for each storage operator (10 buy orders and 10 sell orders).

The Participant may check his/her maximum and minimum margins for purchase and sale and enter orders accordingly. Upon acceptance of orders, however, the system will not check the margins; therefore, it will not notify the Participant of margin violations.

CLOSING AND COMPLETION OF THE SESSION

At the closing of the session, the Participant will no longer be allowed to enter orders. First of all, the system will check the margins of each Participant.

CHECKING OF MARGINS

Various scenarios may arise:

- 1) **The Participant has entered orders within the margins.**
- 2) **The Participant has exceeded the maximum margin:** in this case (for a given storage operator and a given type of order), the sum of the volumes of the orders entered and accepted by the system exceeds the maximum margin: the orders are thus ranked under the merit-order criterion and their volumes are cut (starting with the order with the lowest merit-order rank) until satisfying the margin. The orders with the corrected volume are accompanied by a **“MARGIN VIOLATION”** note, possibly chained with the note entered by the Participant (see Figure 30). The **Qtàtagl** column shows the cut volume, i.e. the volume that the algorithm will take into consideration after the cut owing to margin violation.
- 3) **The Participant has not reached the minimum between the minimum and maximum margin** (in some cases, the minimum margin may exceed the maximum margin): in this case, the sum of the orders entered into and accepted by the system is lower than the minimum between the minimum and maximum margin. In this case, if the Participant has entered a default price specific for that type of offer and for that storage operator, the system will generate an order with that default price and a volume satisfying the margins. As shown in Figure 30, the system has generated an order accompanied by the **“MARGIN VIOLATION GENERATED OFFER”** note.

mercato	qtà or.	qtà tagl.	awqty	prezzo	p.acc.	data flusso	data	op.	tipo	stato	id off.	utente	op. stoccaggio	Notes
MBS	0,0	20,0	20,0	22,53	34,30	07/10/2011	07/10/2011 12.22.55	ENSOL	vendita1	abbinata	768	pbgas.user	STOSGT	MARGIN VIOLATION GENERATED OFFER
MBS	900,0	900,0		15,70	-	09/10/2011	07/10/2011 12.11.35	ENSOL	vendita1	scartata	761	pbgas.user	STOSGT	
MBS	200,0	200,0	111,7	14,50	14,50	09/10/2011	07/10/2011 12.11.35	ENSOL	vendita1	abbinata	760	pbgas.user	STOSGT	
MBS	500,0	500,0	500,0	13,40	14,50	09/10/2011	07/10/2011 12.11.35	ENSOL	vendita1	abbinata	759	pbgas.user	STOSGT	
MBS	1.400,0	700,0		16,45	-	08/10/2011	07/10/2011 11.25.05	ENSOL	vendita1	scartata	710	pbgas.user	STOSGT	MARGIN VIOLATION
MBS	800,0	800,0	800,0	15,54	16,00	08/10/2011	07/10/2011 11.25.05	ENSOL	vendita1	abbinata	709	pbgas.user	STOSGT	
MBS	500,0	500,0	500,0	13,43	16,00	08/10/2011	07/10/2011 11.25.05	ENSOL	vendita1	abbinata	708	pbgas.user	STOSGT	

Figure 30: orders corrected due to margin violation

Figure captions

Home – PB-GAS – orders - Participants

Hide filters... export – refresh - clear

Home – Data – Participants – Users - Signature management - Margin reports - Default prices - PB-GAS - Entry of orders – Orders – Sessions -

Statement of account – Messages – Upload - List of messages

Hide filters.... – export – refresh – clear

Start flow date – type of transaction (all) – order id – market

End flow date – order status (all) – msg id

Market – ordered volume – cut volume – ... price – accepted price – flow date – date – Participant – type (sale) – status (matched/discarded) – order id – user – storage operator - notes

Figure 31 is the margin report indicating that the margins are not satisfied. In it, you will see the exceedances of the maximum margin in red, the volumes below the minimum in blue and the cases where margins are satisfied in black.

home > informazioni > report margini Operatori: Energy Sol

(Nascondi Filtri...) export refresh

Data flusso inizio: 07/10/2011 Operatore stoccaggio: tutti

Data flusso fine: 10/10/2011

op.	data flusso	min. salire	max salire	min scendere	max scendere	qtà presentata salire	qtà presentata scendere	op. stoccaggio
GASBIZ	08/10/2011	40,5	1.000,5	45,5	600,0	0,0	0,0	STOSGT
ENSOL	08/10/2011	20,0	2.000,0	50,3	300,1	2.700,0	0,0	STOSGT
AZGAS	08/10/2011	400,0	3.000,0	500,0	2.000,0	1.700,5	9,0	STOSGT
GASBIZ	07/10/2011	40,5	1.000,5	45,5	600,0	0,0	0,0	STOSGT
ENSOL	07/10/2011	20,0	2.000,0	50,3	300,1	0,0	0,0	STOSGT
AZGAS	07/10/2011	400,0	3.000,0	500,0	2.000,0	0,0	0,0	STOSGT
GASBIZ	09/10/2011	-	-	-	-	0,0	0,0	STOSGT
AZGAS	09/10/2011	-	-	-	-	3.300,0	0,0	STOSGT
ENSOL	09/10/2011	-	-	-	-	1.600,0	0,0	STOSGT
ENSOL	10/10/2011	-	-	-	-	0,0	0,0	STOSGT
GASBIZ	10/10/2011	-	-	-	-	0,0	0,0	STOSGT
AZGAS	10/10/2011	-	-	-	-	0,0	50,0	STOSGT

Figure 31: margin report showing that the margins are not satisfied

Figure captions

Home – data – margin report - Participants

Hide filters... export – refresh

Home – Data – Participants – Users - Signature management - Margin reports - Default prices - PB-GAS - Entry of orders – Orders – Sessions - Statement of account – Messages – Upload - List of messages

Start flow date – storage operator (all)

End flow date – order status (all) – msg id

Participant – flow date – step-un minimum – step-up maximum – step-down minimum – step-down maximum – entered step-up volume – entered step-down volume – storage operator

INVALIDATION OF ORDERS

After checking the margins, the system will invalidate Participants' orders of the same type as the one entered by SNAM Rete Gas. These orders will be identified as **non valide (invalid)**.

CHECKING OF GUARANTEES

The next step is the checking of guarantees in respect of buy orders entered by Participants. The most significant scenario concerns the exceedance of the Participant's available financial guarantee. In this case, the volumes of the entered orders may be curtailed in order to cover the available financial guarantee. Thus, some orders will be identified as **non valide (invalid)**, while other orders will have a curtailed volume. Both invalid and curtailed orders are accompanied by a **"WARRANTY LIMIT EXCEEDING"** note.

EXECUTION AND PRO QUOTA APPORTIONMENT OF ORDERS

At this stage, the market may set the **price** and the **marginal volume** through the intersection of the demand curve with the supply curve.

There may be multiple orders with a price which will then prove to be the marginal price. In this case, the orders are apportioned *pro quota*, i.e. the relevant volume will be shared among all the orders at the marginal price. The volume is apportioned in percentage terms, by weighting the entered volumes. Any remainder is shared starting with the least recently entered order.

MARKET RESULTS

After completion of the session, its details will be concisely reported in the previously described page of sessions.

Moreover, the list-of-messages page displays the market results and the bid notifications. The market results show the price, the marginal volumes and the volumes entered for purchase and sale. Conversely, the bid notifications show the outcome of orders and other details, such as the marginal price, the accepted volume, the cut volume etc. The details concerning the format of these files are available in the **implementation guide**.